

SWDIST

Software Distribution, Installation, Patch & Configuration
Management

Overview

January 2006

Lars Pinne, Fabian Herschel

www.swdist.org

Summary

SWDIST

Software Distribution, Installation, Patch & Configuration Management

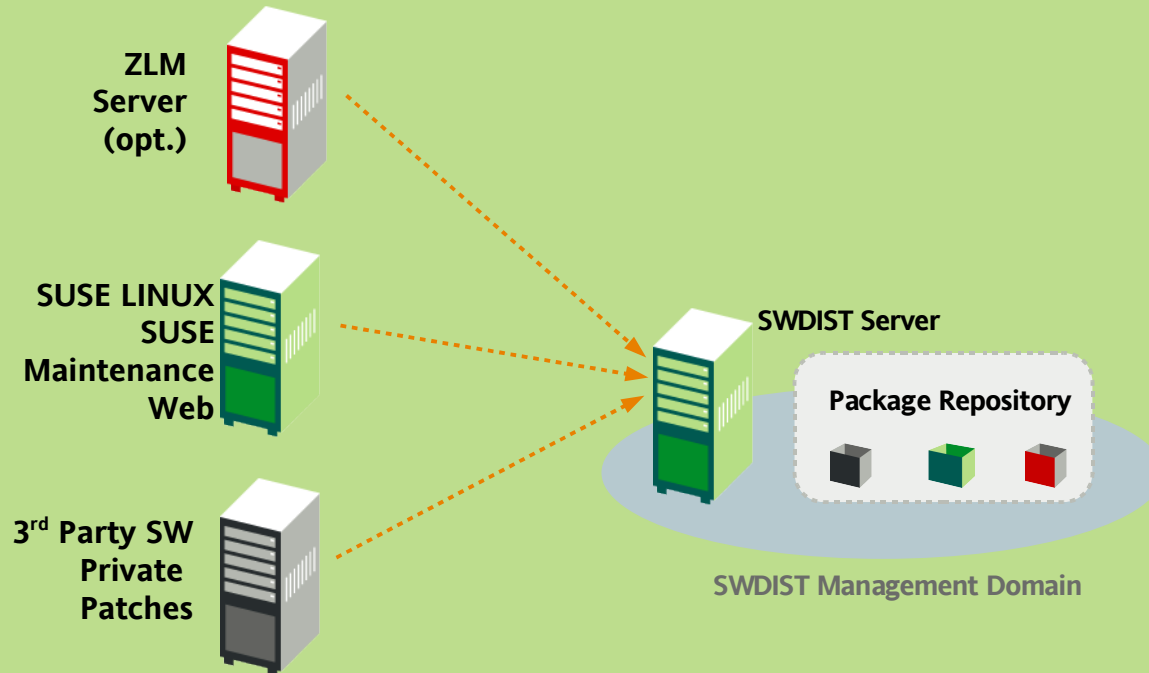
- Minimizes costs for roll-outs, updates and configuration management
- Consistent management of install- and configuration sources
- Unlimited combinations of distros, 3rd party software, patches, architectures
- Superior rollback, dependency resolution and patch handling
- Wide range of scalability
- Flexible system design, prepared for future requirements
- Open database support
- Well defined and documented APIs
- Based on established open source tools and open standards

Functional Overview

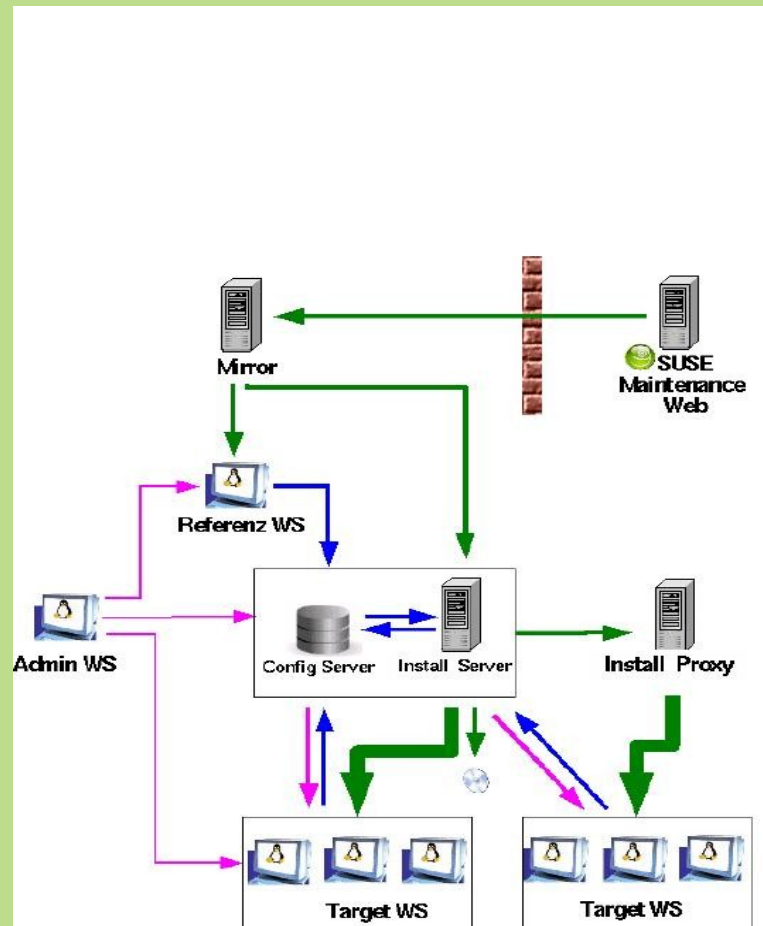
SWDIST supports

- initial installation of targets (workstations and servers)
- configuration management
- management of software and patches
- forced distribution of emergency patches
- central repository for software related system state of targets
- support of multiple combinations of distributions, 3rd party SW, patch levels and hardware architecture
- import of SUSE distributions, including package dependencies and selection lists
- import of SUSE patches, including dependencies
- client GUI for workstations to inform users about updates and allow them to postpone optional updates
- non-interactive client operation for servers
- scalability and high availability

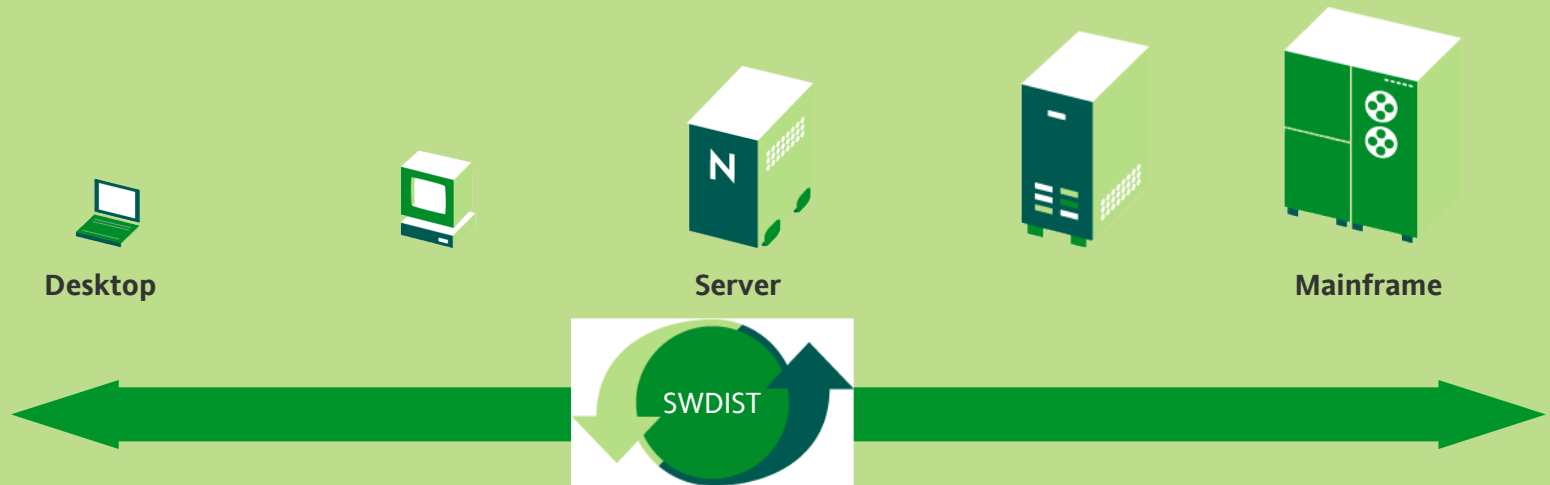
Aggregate Software



Consolidate & Distribute Software



Supported Platforms



Supported Hardware Architectures

- Intel Pentium, AMD Athlon (i386)
- AMD Opteron, Intel EM64T (x86_64)
- Intel Itanium2 (ia64)
- IBM Power (ppc)
- others

Supported Operating Systems

- SUSE LINUX Enterprise Server 8
- SUSE LINUX Enterprise Server 9
- Open Enterprise Server
- Novell Linux Desktop 9
- others

Performance & Scalability

Fact:

SWDIST meets enterprise requirements for performance and scalability.

Features

■ Performance

- up to several 10.000 targets
- fast import of patches
- unattended target installation and configuration in a few minutes

■ Scalability

- 3-tier architecture
- horizontal scalability
- Oracle cluster (opt.)

Security

Fact:

SWDIST ensures security
and data integrity.

Features

- HTTPS
- MD5 sums
- Database access control

High Availability

Fact:

SWDIST can run 24x7.

Features

- Oracle clustering (opt.)
- JBOSS clustering
- loopback mounted ISO images (opt.)

Manageability

Fact:

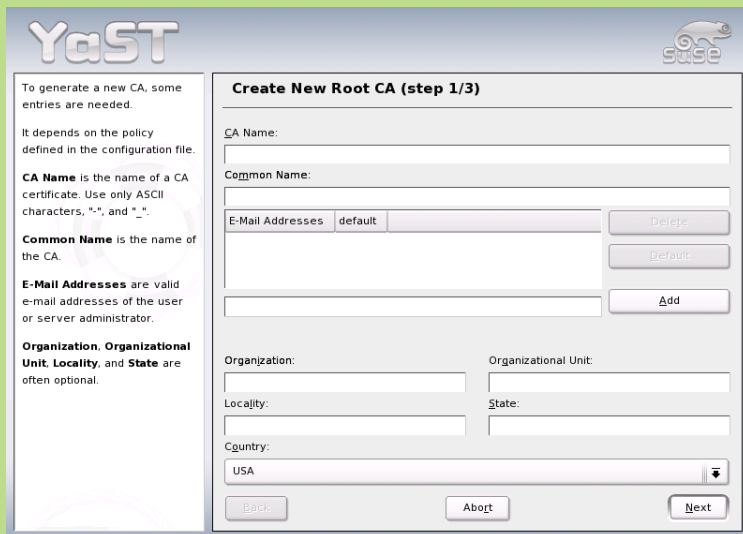
SWDIST allows to manage unlimited combinations of distros, patches and 3rd party software with minimal effort.

Features

- Open Source based framework
- command line tools for administrators
- end user GUI on targets
- CIM Support

Reference Installation via YaST

YaST makes it easy to install, configure, and secure a Linux system.

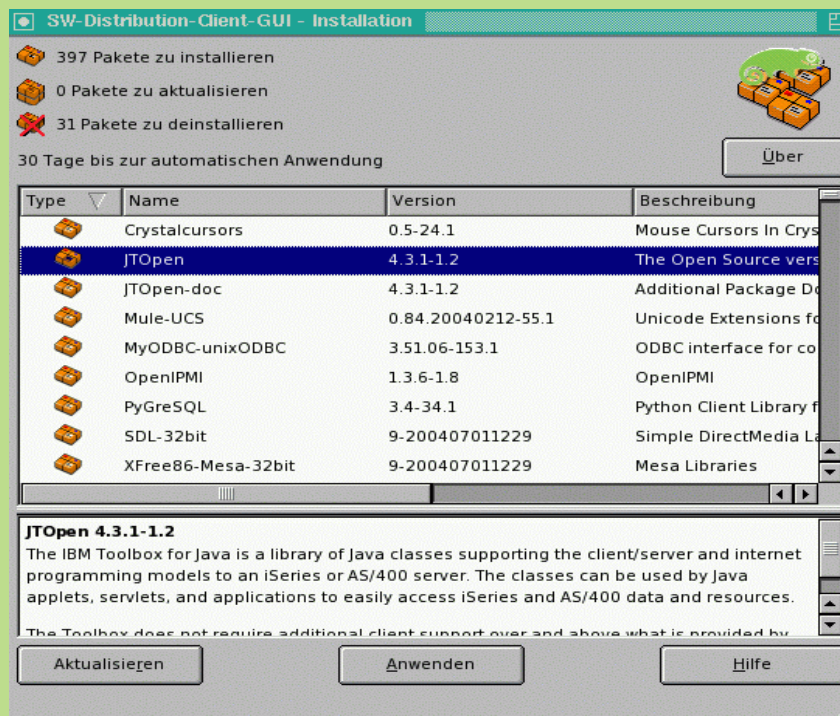


The screenshot shows the YaST configuration interface for creating a new root CA. The window title is "Create New Root CA (step 1/3)". On the left, there is a help panel with the following text: "To generate a new CA, some entries are needed. It depends on the policy defined in the configuration file. CA Name is the name of a CA certificate. Use only ASCII characters, '-', and '_'. Common Name is the name of the CA. E-Mail Addresses are valid e-mail addresses of the user or server administrator. Organization, Organizational Unit, Locality, and State are often optional." The main form contains several input fields: "CA Name:", "Common Name:", "E-Mail Addresses" (with a "default" button and "Delete" and "Add" buttons), "Organization:", "Organizational Unit:", "Locality:", "State:", and "Country:" (with a dropdown menu showing "USA"). At the bottom, there are "Back", "Abort", and "Next" buttons.

- YaST for configuration of the OS
- YaST for configuration of services (eg. mail, file, print)
- DHCP & SLP for automated client configuration
- Open APIs
- CIM Enabled

End user GUI on target WS

On Workstations the GUI



- informs users about pending updates
- allows users to postpone non-critical updates
- informs users how to contact the helpdesk
- allows users to start pending updates immediately

General Disclaimer

This document released under GPLD.